

CAS LX 301 / MET LX 501 / GRS LX 601
Phonetics & Phonology: Introduction to Sound Systems

Fall 2020

Lecture sections

A1: TR 2:00-3:15

Instructor: Prof. Kate Lindsey

Contact: Slack (fastest) or klindsey@bu.edu

Virtual office hours: TR 10-12:30 or by appt

Discussion sections

S1: M 11:15-12:05

S2: M 2:30-3:20

S3: M 3:35-4:25

Teaching Fellow: Felix Kpogo

Contact: Slack (fastest) or fkpog001@bu.edu

Virtual office hours: M 9-11 am or by appt

Course description: This course aims to introduce core concepts in the scientific study of the sounds of spoken language as they are produced and perceived (phonetics) and as they are contrasted and patterned (phonology). We will cover articulatory/acoustic phonetics and fundamental phonological analysis while focusing on cross-linguistic typology and comparison. Students will develop practical skills, including IPA transcription, digital speech analysis, and empirical data collection techniques.

Phonetics topics to be covered include **articulation** (anatomy, mechanisms, manner, coarticulation), **acoustics** (properties of speech signals during transmission), and **perception** (how are sounds heard and understood)

Phonology topics to be covered include **phonemic analysis** (which sounds a language minimally contrasts), **rule-based patterns** (how sounds pattern within a language), and **suprasegmentals** (syllables, stress, tone, intonation)

Course format: Both the lecture and the discussion sections of this class will be offered remotely on Zoom, in order that our discussions of sound and sound-related phenomena may be conducted without the obstruction of face masks or necessary social distancing for in-person learning. It is expected that all students will attend the class synchronously to the best of their ability. Short lectures will be pre-recorded to accommodate any asynchronous learners, but in-class discussion and group activities will not be recorded. If you miss class, please check-in with a classmate to learn what was discussed.

Top Hat

We will be using the Top Hat (www.tophat.com) classroom response system in class. You will be able to access Top Hat and submit answers to questions using Apple or Android smartphones, and laptop/desktop computers. You will receive an email from Top Hat asking you to create an account. Unfortunately, there is a (discounted, negotiated) \$26 charge for Top Hat. To mitigate this, I will not be requiring you to purchase a textbook. I recommend that you sign up for Top Hat the day before our first day of class. You will be entitled to a 7-day free trial AND a refund within 14 days of your activation. So, in the unlikely and unfortunate event that you decide to drop this course, you will be able to obtain a refund if you are still within this 21-day period. See

<https://success.tophat.com/s/article/Student-Refund-Policy-and-Request-Form>

(If you have any trouble with such a refund request, please let me know!)

(For what it's worth, Top Hat is being used in some other BU courses, including some courses in Biology, Computer Science, Chemistry, and Linguistics. You may wish instead to register for a full academic year.)

To prepare for your use of Top Hat, you are encouraged to visit the Quick Start Guide - <https://support.tophat.com/s/article/Student-Top-Hat-Overview-and-Getting-Started-Guide>. It provides a brief overview to get you up and running on the system. There is an orientation video here: <https://goo.gl/qsNk5E>.

Should you require assistance with Top Hat at any time, please contact the Top Hat Support Team directly by email (support@tophat.com), the Contact Support button on their website, the in-app support button, or phone (1-888-663-5491). If you do not receive a satisfactory response from the support team, please let me know!

Slack

We will also be using Slack to facilitate in-class and out-of class discussion. You will also receive an invitation to join a Slack channel for our class. Slack is free. If you haven't used Slack before, consider checking out: <https://slack.com/help/articles/115004071768-What-is-Slack>. You may interact on Slack through a web browser, a computer app, or on your phone. Important announcements will come through Slack so make sure to check it frequently during the semester.

Course objectives: This class is designed to fulfill the following BU Hub areas: Scientific Inquiry II, Quantitative Reasoning I, and Critical Thinking.

Course prerequisites: CAS LX 250 Introduction to Linguistics or equivalent, or instructor approval; basic familiarity with the International Phonetic Alphabet (IPA)

Course requirements: background reading, in-class exercises and participation, homework assignments, midterm exam, final exam, final research project (for LX 501/601 students)

Required texts: All readings for the course will be provided in PDF format. Readings will be selected from:

- *A Course in Phonetics*, 7th ed by Peter Ladefoged and Keith Johnson (supplemental materials: <https://corpus.linguistics.berkeley.edu/acip/>)
- *Introductory Phonology* by Bruce Hayes
- Other relevant readings

Some online resources:

IPA fonts: http://scripts.sil.org/cms/scripts/page.php?site_id=nrsi&id=ipahome

Typing IPA online: <http://ipa.typeit.org>

Praat: <http://www.fon.hum.uva.nl/praat/>

Clickable IPA chart: <http://web.uvic.ca/ling/resources/ipa/charts/IPA1ab/IPA1ab.htm>

IPA Phonetics App:

<http://www.uvic.ca/humanities/linguistics/resources/software/ipaphonetics/index.php>

Fun phonetics stuff from UCLA: <http://www.phonetics.ucla.edu>

Sounds of Speech: <https://soundsofspeech.uiowa.edu/main/english>

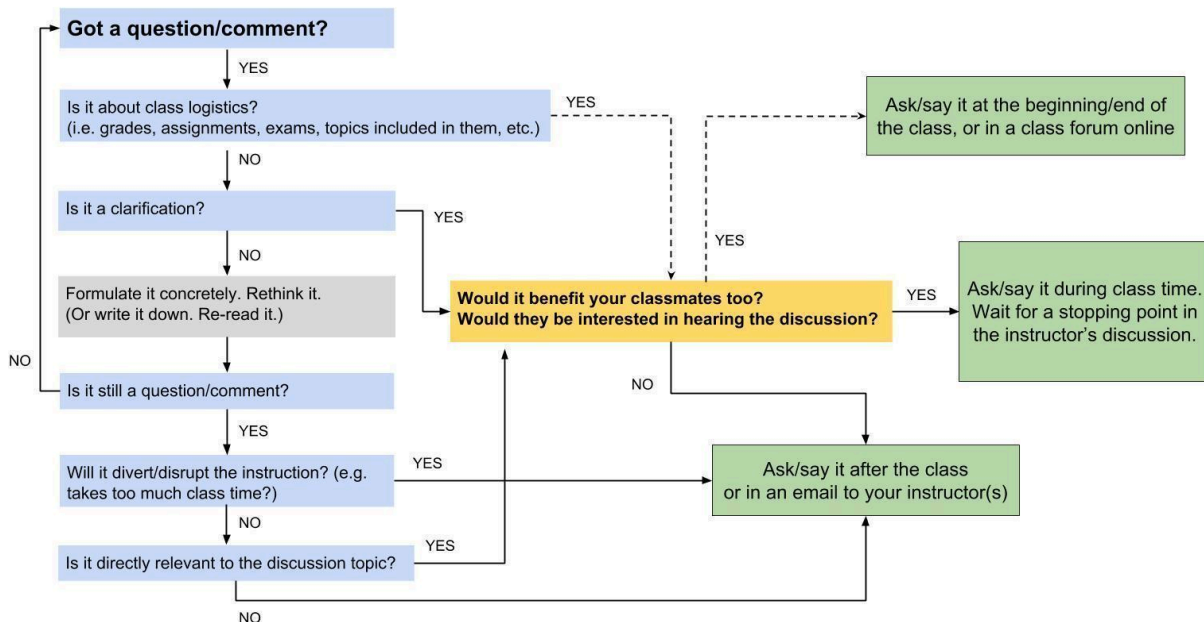
Grading:

Your grades will be kept up to date via the TopHat website.

	LX 301	LX 501/601
In-class participation	10%	10%
Weekly homework	50%	35%
Midterm examination (due Oct 27)	20%	15%
Final examination (due TBD)	20%	15%
Final project	0%	25%

Participation: Your in-class participation in both lecture and discussion sections will be assessed via responses to questions and discussion forums in TopHat. These questions will be made available during class time and will be answerable for participation points for 48 hours. After this period, you may still review the questions, but no participation points will be awarded. The entire class benefits when all students contribute during lectures and in virtual discussion forums. You may wonder whether the question you have is a good question or when to ask it. I want you to know that every question is a good question. A clarificatory question allows us to explain the topic better. A question about an issue we haven't covered yet provides us with a chance to broaden our learning. If I don't know the answer, we can discover something new together, or potentially find a new research topic!

The following graphic, designed by Masoud Jasbi, may help you decide when to ask your question. Remember that our online discussion forums are always the right place to ask.



Readings: In-class lectures and discussions will refer to concepts described in the readings. It will be most helpful for you to complete the assigned reading and answer any accompanying questions before coming to class, so that class time can be spent doing interactive activities and problem sets. Assignments and exams will draw upon data or examples in the readings that may not be explicitly discussed in class. All required readings will be provided via TopHat.

Homework: Homework assignments are due at 2pm on Thursdays. Files should be submitted to TopHat in PDF format or by submitting your answers directly to the TopHat website. In PDFs, you should use Times New Roman (12pt), 1-inch margins, 1.5 line spacing. Do not include your name or any identifying information in the PDF. To avoid grading biases, we grade the assignments anonymously.

Late homework will be accepted up to one week post due date but will lose 5 percentage points for every day that is late.

You may, if you wish, collaborate with your fellow students on homework assignments (but not on the take-home midterm or final exams). Collaboration may involve discussion and problem solving, but not writing. That is, you may discuss the problems together, but you must not write up the same document. Please state clearly at the bottom of each write-up the names of your discussion partners.

Examinations: There will be two take-home exams. The midterm exam will be given on October 22th in class and will be due before the beginning of class on October 27nd. The final

exam will be given in class on December 10th and will be due at the end of the regularly scheduled exam time for this course (**Between Dec 15-19, TBD**).

Final project: Students enrolled in LX501/601 must complete a final project. This year, you will take on the role of a descriptive linguist and write an [Illustration of the IPA](#) for a language that does not yet have a published illustration. Working with a native speaker of this language, and without consulting existing sources, you will create an original description of the sound pattern of the language you have chosen. Initial proposals for projects are due in class on October 22. An early start is highly recommended. This final project is obligatory for those enrolled in LX501/601 and optional for LX301. See me if you are interested.

Grade disputes: Any grade disputes must be submitted in writing. If you want a single question remarked, the entire assignment or exam will be remarked. I will probably be less generous than the original grader was, meaning your grade could end up lower.

Communication: All class announcements will be communicated via Slack (primarily) or TopHat (secondarily). Please make sure that you can receive messages from both Slack and TopHat. If you are having technical issues, please see me. In addition, you are very welcome to come with any questions to my office hours, and you may also make an appointment outside of these times if you cannot make it to office hours.

NOTE: Please plan your communications carefully. I will not be replying to messages or emails about any assignment or exams on the day they are due. Moreover, I only check Slack during 9-5 working hours. Post to general forums so that if I can't answer your query immediately, perhaps another student can.

Attendance: If you miss a class, reach out on Slack to your fellow students for help in making up the material covered in class. Note that in-class quizzes count for your grade.

Addressing the instructor: In person, I prefer to be called Kate. In written communication, more formal circumstances, or if you prefer, you may call me Professor Lindsey. I use she/her pronouns. If you have preferences for how your name should be pronounced or want to share the pronouns you use, please let me know.

Academic Integrity and Support: You are responsible for understanding and complying with the BU Academic Conduct Code in this course (to review the Academic Conduct Code, please see <http://www.bu.edu/academics/policies/academic-conduct-code/>). Graduate students, take note of the GRS Academic Conduct Code: <https://www.bu.edu/cas/current-students/ma-andms-students/academic-policies-and-conduct-code/>. It is assumed, unless you indicate otherwise, that your work in this course is your own. **Work found to be the product of academic dishonesty can receive no credit, and such misconduct must be reported to the university.** If you are experiencing difficulties in keeping up with the academic demands of this course, please consider contacting your academic advisor (or CAS's Office of Academic Advising: 100 Bay State Rd., Room 401, casadv@bu.edu, 617-353-2400)

Schedule

Subject to change. Check Slack or TopHat for any updates.

Week	Month	Date	Topic	Tasks to do before class (2 pm) each day:
0	September	3	Welcome	Assignment 10 assigned (due by end of semester)
1		8	Introduction to the study of speech	
		10		Read L&J Chapter 1.
2		15	Phonetic transcription	
		17		Read L&J Chapter 2.
3		22	The phonetics of American English	Read L&J Chapters 3-4.
		24		Submit Assignment 1.
4		29	Consonants across the world	Read L&J Chapters 6-7.
		October 1		Submit Assignment 2.
5		6	Measuring vowel space and vocal tracts	Read L&J Chapter 9.
		8	Vowels across the world and reading spectrograms	Read L&J Chapter 10 Submit Assignment 3.
6		13	No class (Monday schedule)	
	15	Guest lecture by Lee-Ann Vidal Covas	Submit Assignment 4.	
7	20	Prosody across the world	Read L&J Chapter 5.	
	22	Prosody / Midterm review	Submit final project proposal (501/601).	
8	27	Recap / Phonemic analysis	Submit the take-home midterm exam.	
	29	Phonemic analysis	Read Hayes Chapter 2.	
9	November	3	No class (Election day)	Read Hayes Chapter 4.
		5	Features	Submit Assignment 5.
10		Read Hayes Chapters 6-7.		
10		12	Phonological alternations	Submit Assignment 6.
		17		
11		19	Stress and syllables	Submit Assignment 7.
		24		Read Hayes Chapters 13-14.
12		26	No class (Fall recess)	
		13	1	Tone and intonation
3			Submit Assignment 8	
14		8	Presentations by 501/601	
		10	Final review	Submit Assignment 9.
15	15	No class	Submit final project (501/601)	
	TBA	Finals due	Submit take-home final exam.	

